

B.L.D.E Association's
J.S.S. COLLEGE OF EDUCATION
Affiliated to Rani Channamma University, Belgavi

Phone: 08352-223290
www.bldeajssbed.org

E-Mail: bldeajssbed@gmail.com

Website:

Ref. No: JSSCEB/2011-12/No.
2012

Date: 13-02-

To,
The Director
National Assessment and Accreditation Council
P.O.Box No 1075, Nagarbhavi
Bangalore - 560072
India

Subject : Request for Re-accreditation by NAAC

Ref : Your Letter No. F.4-27/2011 (DS) Dated: 20-12-2011

Respected sir,

I am pleased to inform that the Board of Management and Governing Body have decided to request NAAC to Re-accredit B.L.D.E.A's J.S.S. College of Education, Bijapur.

I have the honour to submit the Institutional Report of our College for Re-Accreditation along with the General information, CD and with relevant documents for your kind consideration and necessary action.

Thanking you

Yours faithfully

Prof. M.S.Hiremath
Co-ordinator

Dr.Jagadeesh.B.
Principal

**B.L.D.E Association's
J.S.S. COLLEGE OF EDUCATION AND PG
STUDY CENTER IN EDUCATION, BIJAPUR**

Inside

i. Submission of RAR – A Letter	
ii. Pioneers of BLDE Association	
iii. Torch Bearers of the Association	
iv. About Bijapur	i-vii
v. B.L.D.E Association – An Overview	viii
vi. JSS College of Education – A glance	ix-xi

RE-ACCREDITATION REPORT

PART-I : Institutional Data

1 Vision and Mission	01
2 Objectives	02
3 Values	03
4 Landmarks	4-5
5 In the years to come	06
6 Faculty Profile	7-20
7 Profile of the Institution	21-25
8 Criterion wise inputs -	
Criterion – I Curricular Aspects	26-28
Criterion – II Teaching-Learning and Evaluation	29-33
Criterion – III Research, Consultancy & Extension	34-36
Criterion – IV Infrastructure and Learning Resources	37-42
Criterion – V Student Support and Progression	43-47
Criterion – VI Governance and Leadership	48-53
Criterion – VII Innovative Practices	54-57

C
O
N
T
E
N
T

**B.L.D.E Association's
J.S.S. COLLEGE OF EDUCATION AND PG
STUDY CENTER IN EDUCATION, BIJAPUR**

Part – II : Evaluative Report

1. Executive Summary	58-61
2. Overall Progress of the Institution	62-65
3. Criterion wise analysis	
Criterion – I Curricular Aspects	66-78
Criterion – II Teaching-Learning and Evaluation	79-111
Criterion – III Research, Consultancy & Extension	112-134
Criterion – IV Infrastructure and Learning Resources	135-151
Criterion – V Student Support and Progression	152-175
Criterion – VI Governance and Leadership	176-200
Criterion – VII Innovative Practices	201-210
4. Mapping of Academic Activities of the Institution	211
5. Declaration by the Head of the Institution	212

PART – III

Annexures

College through the Eyes of Camera

**C
O
N
T
E
N
T**

**B.L.D.E Association's
J.S.S. COLLEGE OF EDUCATION AND PG
STUDY CENTER IN EDUCATION, BIJAPUR**

**Part – I
Institutional Data**

About Bijapur

Karnataka probably has the widest range of historical monuments to offer the tourists. In complete contrast to South Karnataka, North Karnataka depicts a story that is Romantic and reverting. In Bijapur the compelling presence of the Adil Shahi kings is hard to escape. Considered to be a corruption of the word 'Vijayapura' (the city of victory) Bijapur was established around 10th century by the Kalyani Chalukyas but came under the rule of Delhi Sultanate in the late 12th century. But it was in 15th century, when it came Adil shahi dynasty that Bijapur prospered and attained glorious heights. For 200 years of their rule, the kings turned Bijapur into an architectural landscape, building forts, citadels, mosques and public buildings that continue to speak of beauty and finesse. There are more than 35 monuments of historical significance. These monuments may have lost their past glory with time but every today these monuments speak and depict the glory of its time.

Bijapur is fantastic showcase of Islamic architecture both military and religious. The citadel and the fort are distinction defence structures complete with massive ditches and moats (they are now rubbish dumps) bastions with canons and formidable battlements. But it is the remains of the city within these walls that holds the most fascination.

Some 50 mosques over 250 domes dot the city. Most of them built typical dark stone and darkened some more with the age. The most famous of these structures is the Golgumbaj, which has a brooding presence in the centre of town and can be seen from fair way. It is considered to be the **second largest dome in the world**, second only to the dome at St. Peter's Basilica in Rome. Built as a tomb for Mohammad Adilsha, the structure appears symmetrical with four minarets flanking the central dome. The insides fascinate visitors. The central chamber picks up every sound and echoes it seven times. A few flights of stairs lead to the whispering gallery, an acoustic marvel, where the merest whisper at one end is magnified and carried to a listener standing 35 meters away.

Competing with the Gumbaz for attention is the Ibrahim Roza, A Black Taj Mahal, complex of tomb and mosque dedicated to Ibrahim Adil Shah. His wife and other members of his family are also buried here.

The Roza is appreciated for its clean lines and perfect all of which are built on a single rock bed. The elegant pillars, carvings believed to have been done by artisans brought from Persia, demonstrate the inimitable artistry of a bygone era.

There is something for each of use in around Bijapur like Badami, Pattadakall, Aihole, Kudal Sangam, Almatti Dam, Hampi and Kishikinda water park.

Demographics:

Bijapur has an area of 10541 square kilometres and a population of 18,06,918 (2001 census). It is bounded on the east by Gulbarga district and the south east by Raichur district and South and South west by Bagalkot district and on the west by Belgaum district and Sangli and Solapur on the north (both belong to Maharashtra State).

Socio-Economic Profile of Bijapur

No doubt Bijapur has the glorious past but at the same time the demographic and economic data give a contrasting picture depicting the social and economic backwardness, in spite of having 05 rivers. As per the 2001 census 3,34,254 people belong to SC and 30,051 to ST. People belonging to the Lambani tribe living in villages are referred as “Tandas”.

Farming and Agriculture related business is the main occupation for many people in the district. Of the total geographical area of 10530 square kilometres, 7760 square kilometres, is available for cultivation which is 74% of the total area, while areas under forest account for only 0.19% of the total area. Only 17.3% of the net cultivable area is irrigated and the balance 82.07% of the area has to depend on monsoons. The average annual rainfall for the district is 553mm with 37 rainy days. It shows that Bijapur district is a drought prone area. Due to this district can be categorized as poor yielding area.

However, there is a slight shift towards commercial crops like Sugarcane, Cotton, Grapes over the last two years. It is also found that there are no large scale industries in the district. The below table shows wherein Bijapur ranks 23rd in the state human development index. It stands 24th in the health index and 21st in education index and 23rd in the income index.

**Status of backward revenue districts of Karnataka under parent
university jurisdiction.**

Division	Relatively Developed	Backward	More Backward	Most Backward	Total Talukas	HDI	
						1991	2001
Bijapur	--	Bijapur	--	Muddebihal, B.Bagewadi, Indi, Sindagi	5	21	23
Bagalkot	--	--	Hunagund Badami	--	4	20	22
Belgaum	--	Raibag, Bailhongal, Hukkeri, Ramdurg	Athani Gokak Soudatti	--	7	9	8
Dharwad	--	Navalgund Kundagol	Kalaghatgi	--	7	10	10
Gadag	--	Ron Shirhatti	Mundaragi	--	7	17	13
Karwar	--	Ankola Siddapur	Supa Bhatkal	--	4	1	2
Haveri	--	Haveri Byadagi Hanagal	Savanur Shiggaon Hirekerur	--	6	22	20

Literacy Rank of Districts and % under parent University Jurisdiction

Sl.No	Name of the District	1961	2001	% age
1	Bijapur	10	17	57
2	Bagalkot	8	11	64.42
3	Belgaum	3	7	69.17
4	Dharwad	4	4	76.59
5	Gadag	--	--	--
6	Karwar	--	--	--
7	Haveri	--	--	--

Composition of HDI 2001

Sl.No	District	Indicator						HDI	
		Health		Education		Income			
		Index	Rank	Index	Rank	Index	Rank	Index	Rank
1	Bagalkot	0.597	27	0.636	22	0.539	12	0.591	22
2	Bangalore Rural	0.692	6	0.662	20	0.605	4	0.653	6
3	Bangalore Urban	0.705	5	0.887	1	0.666	1	0.753	1
4	Belgum	0.712	2	0.699	15	0.532	13	0.648	8
5	Bellary	0.685	7	0.618	23	0.549	9	0.617	18
6	Bidar	0.638	17	0.689	17	0.470	26	0.599	21
7	Bijapur	0.627	24	0.642	21	0.499	23	0.589	23
8	Chamrajnagar	0.642	15	0.570	26	0.518	17	0.576	25
9	Chikmangalur	0.637	19	0.742	9	0.563	6	0.647	9
10	Chitradurga	0.660	12	0.704	14	0.517	18	0.627	16
11	Dakshina Kannada	0.707	3	0.823	4	0.636	2	0.722	2
12	Davangere	0.680	8	0.711	13	0.515	19	0.635	12
13	Dharwad	0.615	26	0.758	7	0.553	8	0.642	10
14	Gadag	0.628	23	0.750	8	0.525	15	0.634	13
15	Gulbarga	0.632	20	0.572	25	0.490	25	0.564	26
16	Hasan	0.670	10	0.729	10	0.519	16	0.639	11
17	Haveri	0.620	25	0.699	169	0.491	24	0.603	20
18	Kodagu	0.638	18	0.833	3	0.621	3	0.697	4
19	Kolar	0.653	13	0.713	12	0.508	21	0.625	17
20	Koppal	0.642	16	0.576	24	0.529	14	0.582	24
21	Mandya	0.632	21	0.682	18	0.513	20	0.609	19
22	Mysore	0.663	11	0.669	19	0.561	7	0.631	14
23	Raichur	0.648	14	0.524	27	0.469	27	0.547	27
24	Shimoga	0.707	4	0.766	6	0.547	10	0.673	5
25	Tumkur	0.672	9	0.714	11	0.505	22	0.630	15
26	Udupi	0.713	1	0.842	2	0.588	5	0.714	3
27	Uttar Kannada	0.632	22	0.781	5	0.546	11	0.653	7
	Karnataka	0.680		0.712		0.559		0.65	

The performance of districts in human development: 2001 and 1991

Sl.No	District	HDI 2001		HDI 1991	
		Index	Rank	Index	Rank
1	Bagalkot	0.591	22	0.505	20
2	Bangalore Rural	0.653	6	0.539	11
3	Bangalore Urban	0.753	1	0.623	4
4	Belgum	0.648	8	0.545	9
5	Bellary	0.617	18	0.512	18
6	Bidar	0.599	21	0.496	23
7	Bijapur	0.589	23	0.504	21
8	Chamrajnagar	0.576	25	0.488	24
9	Chikmangalur	0.647	9	0.559	7
10	Chitradurga	0.627	16	0.535	13
11	Dakshina Kannada	0.722	2	0.661	1
12	Davangere	0.635	12	0.548	8
13	Dharwad	0.642	10	0.539	10
14	Gadag	0.634	13	0.516	17
15	Gulbarga	0.564	26	0.453	25
16	Hasan	0.639	11	0.519	16
17	Haveri	0.603	20	0.496	22
18	Kodagu	0.697	4	0.623	3
19	Kolar	0.625	17	0.522	15
20	Koppal	0.582	24	0.446	26
21	Mandya	0.609	19	0.511	19
22	Mysore	0.631	14	0.524	14
23	Raichur	0.547	27	0.443	27
24	Shimoga	0.673	5	0.584	5
25	Tumkur	0.63	15	0.539	12
26	Udupi	0.714	3	0.659	2
27	Uttar Kannada	0.653	7	0.567	6
	Karnataka	0.650		0.541	

A close perusal of the above facts clearly highlights the backwardness of Bijapur district in literacy, education, income, health, economy, human development and social backwardness. The UGC has also recognized the facts of its backwardness. Therefore higher education has to play an important role in initiating a socio-economic change leading to sustainable development. The JSS College of Education is progressing in this direction.

**The satellite Image of B.L.D.E Association's
JSS College of Education, S.S. High School Campus,
Bijapur**



JSS College of Education, Bijapur

B.L.D.E. Association: History and its Growth....

Bijapur, once the cradle of Vachanakaras and Vachanan Literature, became the capital of the Adil Shahi's who constructed world famous monuments like Gol-Gumbaz and Ibrahim Roza. In the course of history, though a district of five rivers, it remained backward in every respect under the British rule. An educationally and economically backward district Bijapur had a bright ray of hope when men of philanthropy founded B.L.D.E. Association with a visionary zeal in 1910. They were inspired by the belief that education was the only means to chart a progressive future. Behind the inception of this association was the vision, foresight, and relentless efforts of eminent lovers of knowledge like Vachana Pitamaha Dr. P.G. Halakatti, Shivayogi Sangana Basava Swamiji of Banthanal and their disciples. Further, its patron the late Shri B.M. Patil, the then Minister in Government of Karnataka, fostered and elevated the Association to its present academic qualitative and quantitative heights.

The B.L.D.E. Association which is celebrating its Centenary year has been working with a deep sense of commitment to bring about multi-lateral development in the students. Within the span of a century, the Association has witnessed an unexpected growth in all its spheres of academic services by the development in the students. . By the devotion and dedication of the present Management headed by Shri M.B. Patil, MLA, Shri.B.R.Patil, Vice President and G.K. Patil, MLC the Association has heralded its new wings in various disciplines such as Medical, Engineering, Business Management , Fine Arts, Law, Education, Pharmacy, Nursing, Commerce, Basic Sciences, Humanities, etc. It derives pride in being one of the premier educational centers embracing in its arms more than 75 institutions from Primary to Professional and PG courses. It also runs an Shri.B.M.Patil Public School (C.B.S.E). At present, more than total numbers of students in BLDE **19,866** students are getting educated under its fold. It also runs 1000 bedded hospital with super specialty facilities and a Research Centre.

These institutions run by the Association have made their indelible mark on the educational map of Karnataka. To crown it, the Association has obtained the status of B.L.D.E. University for its Medical College. Looking at B.L.D.E.A's now and looking back at its inception and progress which the association has made over the years, one is simply thrilled by its colossal growth.

B.L.D.E. ASSOCIATION'S

J.S.S. COLLEGE OF EDUCATION, BIJAPUR – A GLANCE

BLDE Association is one of the pioneering Educational Association in the North Karnataka. It has a large net work of several institutions like Degree colleges, PU colleges and Medical and Engineering Colleges. It has also institute of Business management, Physical Education and Ayurveda College.

BLDE Association's JSS College of Education established in 1980 is affiliated to Rani Channama University Belagavi. Under the guidance of the far sighted Visionary and general secretary of late Shri B.M Patil the college was started in the year 1980. Dr Jagadeesh B. took the charge of the institution in 2007. Presently it runs the B.Ed and M.Ed programmes.

The special feature of the institution is it has a highly qualified faculty all most 90% of the members of faculty have P.hd degree in Education. The Research activities are under taken by members of faculty. Five members of faculty are involved in the institutional projects and Post Doctoral research programmes. The institution has launched its own research Journal entitled, "A Journal of BLDE Association Education and Research" with ISSN 2258-3188, enabling faculty and students to publish their creative work. The institution also conducts State and National level Seminars and Workshops involving students and faculty in various subjects. Students are initiated in various innovative techniques and Concept Attainment model, Brain storming, Buzz, Panel discussion, Group discussion etc. Most of the members of faculty are engaged in framing the syllabus and examination work in KU Dharwad and RC University Belagavi.

The institution also made a special provision of learning for average and brilliant students. Remedial classes are being conducted to help students in their studies. Student feedback mechanism will serve as a guideline for the improvement of faculty. In pursuance of self study students are encouraged to utilize library facilities to enhance their knowledge and develop the habit of independent studies. Physically Challenged students get a special attention in this regard. The Mentoring system has enabled the members of faculty to identify and address the students difficulties. In addition to RC University examination pattern the college conducts regular Seminars and gives assignments to students throughout the year. Students are appraised of their performance from time to time.

A Brief Account of Infrastructure:

The college has a spacious building which provides adequate accommodation for class rooms, lecture halls, laboratories, library and administrative blocks.

Library:

Over the years the college has developed a rich library with more than 16200 volumes. The collection comprises of books on core papers, method papers and optional papers both in Kannada and English. The collection includes text books, reference books, encyclopedias and dictionaries, educational and research survey books etc, related to both B.Ed and M.Ed courses. Online accessibility of E-journals provision is made for students.

Laboratories:

The college has separate Science laboratory, Psychology laboratory, Language laboratory, Educational technology and Computer laboratory.

Laboratory of Educational Technology:

The college has laboratory of educational technology which is equipped with the technological gadgets, Smart boards, Slide projectors, etc. This facility is being used by staff and students.

Science laboratory:

Science laboratory is well equipped with all the necessary apparatus.

Psychology laboratory:

The psychology laboratory is equipped with all the necessary equipments for the conduct of psychological experiments.

Computer laboratory:

There is well equipped computer laboratory with 18 computers. All the necessary accessories, internet facilities and softwares required for the conduct of practical classes are available.

Results:

The College has maintained a consistent bright record of students in examinations both in B.Ed and M.Ed.

INDIRA GANDHI NATIONAL OPEN UNIVERSITY - STUDY CENTER

Indira Gandhi National Open University Center has been established in the year 1990, offering 30 programmes like PGDHE, CIG, DCH, CIC, MCA etc. The center has its independent library having CDs and Audio-video Aids. It is elevated to the status of the regional center in the year 2010.

KARNATAKA STATE OPEN UNIVERSITY (KSOU) STUDY CENTER – M.ED

KSOU Mysore has its study center in the institution functioning from 2000-01. Presently 35 students are involved in M.Ed programme under the scheme.

**B.L.D.E Association's
J.S.S. COLLEGE OF EDUCATION AND PG
STUDY CENTER IN EDUCATION, BIJAPUR**

OUR VISION

BUILDING

Competent, Creative & Committed

NATION BUILDERS

for the Future

MISSION

To be an Institution of excellence
for building the Society through
Enlightenment and empowerment of
Teachers who are Cognitively
Enriched, Affectively balanced,
Spiritually inspired, Socio-culturally
Committed and Research minded
Professionals.

**B.L.D.E Association's
J.S.S. COLLEGE OF EDUCATION AND PG
STUDY CENTER IN EDUCATION, BIJAPUR**

OBJECTIVES

1. To train teacher students in cognitive skills
2. To empower the students with pedagogical principles for implementing them in schools.
3. To enable the teacher to be role models
4. To develop socio- cultural values in the society
5. To prepare the teacher students to face the challenges of modern times
6. To collaborate with Government and Non-government organization in community welfare activities.

**B.L.D.E Association's
J.S.S. COLLEGE OF EDUCATION AND PG
STUDY CENTER IN EDUCATION, BIJAPUR**

VALUES

1. Inculcating a sense of Life-Long-Learning
2. Inculcating the spirit of “Learning to know” “Learning to live together” “Learning to do” and “Learning to be”.
3. Importing inquisitiveness and scientific temperament among the teacher – students through project oriented activities
4. Inculcating values, civic responsibilities and a sense of National integrity.
5. Empowering the students to face the challenges of competitive world
6. Empowering the student- teachers in Nation Building.

**B.L.D.E Association's
J.S.S. COLLEGE OF EDUCATION AND PG
STUDY CENTER IN EDUCATION, BIJAPUR**

LANDMARKS

1	Establishment of college	1980
2	Inclusion in 2(f) of UGC act	1989
3	Permanent affiliation granted	1989
4	Establishment of IGNOU Study center	1990
5	Inclusion in 12b of UGC act	1994
6	Renaming college as JSS College of Education	1995
7	Gold medal in Psychology	1996
8	Reorganization by NCTE	1996
9	Visit by Vice-Chancellor Dr. R.S. Ramegouda	1997
10	Establishment of KSOU B.Ed study center	1997
11	Hosting CTE national conference	1999
12	Establishment of PG department M.Ed regular	2000
13	Establishment of KSOU M.Ed study center	2001
14	Shifting of college to the present campus	2001
15	Visit by Vice chancellor Dr. A.M.Pathan K.U.Dharwad	2002
16	Construction of hostel for the women	2002
17	Visit by Vice chancellor Dr. M.Khajapeer, K.U.Dharwad	2003
18	Visit by Vice chancellor Dr. Sayeda Akthar, K.S.W.U.Bijapur	2004
19	Organized state level seminar	2005
20	Visit by Vice chancellor Dr. K.Sudha Rao K.S.O.U.Mysore	2006
21	NAAC committee visit	2007
22	Dr. Jagadeesh B. taken over charge as the principal of the college	2007
23	Organized workshop on personality development	2007
24	Enhancement of seats for M.Ed course to 40	2008
25	Organized workshop on Micro teaching for D.Ed college lecturers	2008

26	Organized workshop on Effective communication skills	2008
27	University level two ranks 1 st and 10 th	2009
28	Organized workshop on Psychological tests and experiment B.Ed college lecturers	2009
29	College comes under grant in aid	2009
30	Organized workshop on Intended 10 th Standard question paper for secondary school teachers	2009
31	Organized workshop on Research articles and innovative teaching	2009
32	Organized national level conference on Technology mediated learning for professional developments of personnel at teacher education level.	2009
33	Constructed new building for M.Ed.	2009
34	College affiliated to New Rani Channamma University Belgavi	2010
35	Visit by Vice Chancellor Dr. B.R. Ananthan Rani Channamma University Belgavi	2010
36	Dr. Jagadeesh B. nominated as Dean Dept of Education RCU Belgavi	2010
37	Four faculty members conferred with Ph.D degree	2011
38	Organized inter-college volley ball competition	2011
39	Installation of interactive white board	2011
40	Organized inter-college debate competition	2011
41	Visit by Vice Chancellor Dr. Geeta Bali K.S.W.U Bijapur	2011
42	Miss S.P.Rachangond selected as University Blue in Cycling at RCU Belgavi	2011

**B.L.D.E Association's
J.S.S. COLLEGE OF EDUCATION AND PG
STUDY CENTER IN EDUCATION, BIJAPUR**

IN THE YEARS TO COME

2011-12

- Add on courses
- To undertake UGC research projects
- Establishing research center
- Awareness programmes for practicing schools.
- Organization of seminars/conferences

2012-13

- Establishing digital library
- Faculty exchange programme
- Establishing linkages with international organization
- Starting M.Phil courses
- Conducting coaching classes

2013-14

- E-administration
- Adopting a village
- Entrepreneurship training for women

FACULTY PROFILE

Name	Dr.Jagadeesh.B.
Designation	Principal
Educational qualification	M.A, M.Ed, M.Phil, Ph.D
Teaching experience	30 year
Subjects taught	Educational Psychology Kannada Method, Value Education
Research activities	Guided M.Ed. dissertation
Professional specialization	History of Education , Philosophy of Education
Participation in	
a)Orientation course	1
b)Refresher courses	4
Paper presented in	
a)National Conf./Sem.	3
b)International Conf./Sem.	-
Publication	
a)International journal	-
b)National journals-ref papers	2
-- Non ref papers	
c) Academic articles in reputed magazines/News papers	
d)Books published	1
e)Books Edited	2
Consultancy services	-
Awards/recognition/patents	---
Other activities/Social Service	Literary Club Activity -Religious Activity and Organised Community Service programmes. Co-Coordinator Spandan Sahitya Balag

FACULTY PROFILE

Name	Dr.Aiholli.V.D.
Designation	Sr. Lecturer
Educational qualification	M.A., M.Ed., M.Phil., Ph.D., MADE
Teaching experience	30 years
Subjects taught	Phil and Socio Foundation of Education, Edn in emerging India Geography Method,SUPW
Research activities	Guided 15 MPhil students
Professional specialization	Distance education –Educational Administration and Management, In-service Education
Participation in a)Orientation course b)Refresher courses	- 4
Paper presented in a)National Conf./Sem. b)International Conf./Sem.	20 4
Publication a)International journal b)National journals-ref papers -- Non ref papers c) Academic articles in reputed magazines/News papers d)Books Edited e)Any other (specify)	- 5 Articles 2 Articles 10 20 Articles published in kannada
Consultancy services	1)SSA-Sarva Shikshan Abhiyan Bijapur 2)S.M. High School, Mulwad(as a member)
Awards/recognition/patents	Best chairmen for B.Ed valuation from KU Dharwad
Other activities/Social Service	Worked as a General secretary of Hipparagi prathishtana Participated in Literary activities Participated in sahitya parishatya programmes Mahamane programmes

FACULTY PROFILE

Name	Dr.Meena.B.Kalamadi
Designation	Lecturer
Educational qualification	B.Sc, M.A, M.Ed. PhD, MPS
Teaching experience	28 Years
Subjects taught	Educational Technology .Population Science, Physical Science
Research activities	Guided 10 M.phil students
Professional specialization	Educational Technology, Curriculum, Evaluation, Population Science.
Participation in a)Orientation course b)Refresher courses	4 Refresher Courses
Paper presented in a)National Conf./Sem. b)International Conf./Sem.	8 papers presented 5 papers presented
Publication a)International journal b)National journals-ref papers -- Non ref papers c) Academic articles in reputed magazines/News papers d)Books published e)Any other (specify)	1 Article 1 Article 1 Book
Consultancy services	REMS, DIET Bijapur
Awards/recognition/patents	
Other activities/Social Service	Working as secretary FPAI, Bijapur Branch

FACULTY PROFILE

Name	Sri. Bapuray. Basagond.Mulawad.
Designation	Physical Education Director
Educational qualification	B.A., M.P.Ed., M.Phil.
Teaching experience	25 Years
Subjects taught	Health and Physical Education
Research activities	
Professional specialization	Physical Education
Participation in	1
a)Orientation course	
b)Refresher courses	3
Paper presented in	
a)National Conf./Sem.	-
b)International Conf./Sem.	
Publication	
a)International journal	-
b)National journals-ref papers	
-- Non ref papers	-
c) Academic articles in reputed magazines/News papers	
d)Books published	1-Health and Physical Education
e)Any other (specify)	
Consultancy services	-
Awards/recognition/patents	-
Other activities/Social Service	Worked as principal (C.P.Ed College) RCUB's cycling team manager Worked as officials of sports meets and competition

FACULTY PROFILE

Name	Prof. M.S.Hiremath
Designation	Sr Lecturer
Educational qualification	M.A, MEd, M.Phil (Ph.D)
Teaching experience	20 Years
Subjects taught	Philosophical and Sociological Foundn of Education Educational Management, History method, Population Education
Research activities	Guided M.Ed. dissertations
Professional specialization	Computer Literacy, History method
Participation in	
a)Orientation course	2
b)Refresher courses	4
Paper presented in	7
a)National Conf./Sem.	-
b)International Conf./Sem.	1(Attended)
Publication	
a)International journal	
b)National journals-ref papers	2 Articles
-- Non ref papers	-
c) Academic articles in reputed magazines/News papers	-
d)Books published	-
e)Any other (specify)	-
Consultancy services	1)S.V.Sangha College of Education , Nalatwad 2)Rajeshwari Karpurmath D.Ed College Bijapur
Awards/recognition/patents	“Shri Guru” Recognition Award by Vijay Prakashan,Nalaatwad
Other activities/Social Service	Religious, Social Service

FACULTY PROFILE

Name	Dr.A.V.Bamagond
Designation	Lecturer
Educational qualification	MSc, MEd, Phd., CIG
Teaching experience	12 years
Subjects taught	Educational Psychology, Guidance and Counseling in Edn, MOT Biological Science
Research activities	Guided 10 M. Phil Students Guiding 01 Ph.D student
Professional specialization	Psychological Services
Participation in a)Orientation course b)Refresher courses	1 -
Paper presented in a)National Conf./Sem. b)International Conf./Sem.	7 5
Publication a)International journal b)National journals-ref papers -- Non ref papers c) Academic articles in reputed magazines/News papers d)Books published e)Any other (specify)	1 Article 7 Articles 2 Articles 4 Books published 1-Research based-ISBN marked 3-Kannada medium 1-Article in ISBN marked Book
Consultancy services	Consultant to IL and FS Education and Technology Services limited, Banglore
Awards/recognition/patents	
Other activities/Social Service	Editorial board member of the ISSN marked journal Shiksan soudha.

FACULTY PROFILE

Name	Dr(smt) Bharathi.Y.Khasnis
Designation	Lecturer
Educational qualification	M.Sc,M.Ed, M.Phil, Ph.D
Teaching experience	11 Years
Subjects taught	Mathematics, Curriculum and Evaluation, Development of Education system in India
Research activities	Project undertaken-A study on Interpersonal relation of B.Ed students through co-operative learning. Guided M.Ed dissertations.
Professional specialization	Curriculum and Evaluation
Participation in a)Orientation course b)Refresher courses	- 1
Paper presented in a)National Conf./Sem. b)International Conf./Sem.	10 02
Publication a)International journal b)National journals-ref papers -- Non ref papers c) Academic articles in reputed magazines/News papers d)Books published e)Any other (specify)	1 Article 3 Articles 1 Article - - -
Consultancy services	-
Awards/recognition/patents	---
Other activities/Social Service	Survey Help to poor Boys

FACULTY PROFILE

Name	Dr.G.R.Angadi
Designation	Lecturer
Educational qualification	MSc(IT), M.Phil(CS),MEd,M.Phil., Ph.D.,PGDCA.
Teaching experience	10 years
Subjects taught	Educational Technology, Computer Education/ICT in Education, Physical Science(MOT) and Action Research
Research activities	Guided M.Ed. dissertations
Professional specialization	Educational Technology and ICT in Education
Participation in a)Orientation course b)Refresher courses	1 1
Paper presented in a)National Conf./Sem. b)International Conf./Sem.	6 7
Publication a)International journal b)National journals-ref papers c)Any other (specify)	3 Articles 4 Articles Having own website http://sites.google.com/site/drgrangadi Life member: AIAER and IATE.
Consultancy services	Consultant to I Land FS Education and Technology Services Ltd, Bangalore., With effect from 1 st Apr 2009 till 31 st March,2010.
Other activities/Social Service	<ul style="list-style-type: none"> • Integrating ICT in curriculum transaction. • Training to the aspirants in the basic ICT skills and use of ICT based learning resources. • Resource person in life skills. • Master Trainer in Computer/ICT in Education. • Research Data Analysis using SPSS/PASW.

FACULTY PROFILE

Name	Dr.Kori Manjunath Babu
Designation	Lecturer
Educational qualification	M.A, MEd, M.Phil, Ph.D
Teaching experience	7 years
Subjects taught	Educational Technology, Population Education Kannada method
Research activities	Guided M.Ed dissertations.
Professional specialization	Educational Management
Participation in	
a)Orientation course	1
b)Refresher courses	1
Paper presented in	
a)National Conf./Sem.	5
b)International Conf./Sem.	-
Publication	
a)International journal	2 Articles
b)National journals-ref papers -- Non ref papers	-
c) Academic articles in reputed magazines/News papers	-
d)Books published	
e)Any other (specify)	-
Consultancy services	-
Awards/recognition/patents	--
Other activities/Social Service	Joint secretary of Alumni BLDEA's JSS College of Education. Conducting Cultural Activities as per guidance of CCRT Red Cross activities (Programme officer of Youth Red Cross Club)

FACULTY PROFILE

Name	Prof. Vijayakumar Palled
Designation	Lecturer
Educational qualification	M.A,M.Ed, M.Phil, Pursuing Ph.D
Teaching experience	21 Years
Subjects taught	Philosophical and Sociological Foundation of Education MOT English
Research activities	Guided M.Ed. dissertations.
Professional specialization	Advanced Techniques of Instruction and Curriculum Development
Participation in a) Orientation course b) Refresher courses	- -
Paper presented in a) National Conf./Sem. b) International Conf./Sem.	-- --
Publication a) International journal b) National journals-ref papers -- Non ref papers c) Academic articles in reputed magazines/News papers d)Books published e)Any other (specify)	-- -- -- -- --
Consultancy services	-
Awards/recognition/patents	-
Other activities/Social Service	Delivered Special Lectures participated Social and Cultural Activities

FACULTY PROFILE

Name	Prof. Jyoti .S.Pattanshetti
Designation	Lecturer
Educational qualification	M.Sc,M.Ed, M.Phil,(pursuing Ph.D and PGDHE)
Teaching experience	7 Years
Subjects taught	Educational Psychology and Research Methodology and MOT-Physical-Science
Research activities	Participated in Research methodology workshops. Guided M.Ed. dissertations
Professional specialization	Psychological services
Participation in a)Orientation course b)Refresher courses	- -
Paper presented in a)National Conf./Sem. b)International Conf./Sem.	8 4
Publication a)International journal b)National journals-ref papers -- Non ref papers c) Academic articles in reputed magazines/News papers d)Books published e)Any other (specify)	2 Articles 2 Articles - - Life member of Research Professional Body AIAER
Consultancy services	-
Awards/recognition/patents	-
Other activities/Social Service	

FACULTY PROFILE

Name	Sri.S.B.Hosamani
Designation	Lecturer
Educational qualification	M.A(Kan), M.A(Eco),M.Ed,M.phil,NET
Teaching experience	10 Years
Subjects taught	Advanced Instructional Technology.
Research activities	Guided M.Ed dissertations
Professional specialization	Advanced Instructional Technology. Applied Instructional Technology.
Participation in a)Orientation course b)Refresher courses	4 -
Paper presented in a)National Conf./Sem. b)International Conf./Sem.	8 2
Publication a)International journal b)National journals-ref papers -- Non ref papers c) Academic articles in reputed magazines/News papers d)Books published e)Any other (specify)	- - - -
Consultancy services	-
Awards/recognition/patents	-
Other activities/Social Service	Life membership of AIAER Delivered Special Lecturer Participated many social and cultural activities.

FACULTY PROFILE

Name	Prof. Sunil.S.Patil
Designation	Lecturer
Educational qualification	M.Sc., M.Ed., PGDC
Teaching experience	6 Years
Subjects taught	Technology of Teacher Behavior
Research activities	
Professional specialization	Guidance and Counseling and MHA
Participation in a)Orientation course b)Refresher courses	- -
Paper presented in a)National Conf./Sem. b)International Conf./Sem.	4 -
Publication a)International journal b)National journals-ref papers -- Non ref papers c) Academic articles in reputed magazines/News papers d)Books published e)Any other (specify)	- - - - -
Consultancy services	-
Awards/recognition/patents	
Other activities/Social Service	Red cross activities , AIAER member

FACULTY PROFILE

Name	Prof. Hiremath. Basavaraj.Siddaramayya
Designation	Lecturer
Educational qualification	M.A(Kan)., M.A(Hist)., M.Ed., M.Phil
Teaching experience	7 Years
Subjects taught	AIT, Advanced education psychology
Research activities	
Professional specialization	Guidance and Counseling and MHA
Participation in	
a)Orientation course	2
b)Refresher courses	1
Paper presented in	
a)National Conf./Sem.	5
b)International Conf./Sem.	2
Publication	
a)International journal	-
b)National journals-ref papers	
-- Non ref papers	-
c) Academic articles in reputed magazines/News papers	
d)Books published	-
e)Any other (specify)	-
Article published	Vijaya Karnataka Kannada News Papers”
Consultancy services	
Awards/recognition/patents	-
Other activities/Social Service	Red cross activities , AIAER member Joint Secretary of Alumini BLDEA’s JSS College of Education Delivered Special Lecturers

A. PROFILE OF THE INSTITUTION

1. Name and address of the institution : B.L.D.E.A's, J.S.S College
of Education,
S.S. Campus, Ram Mandir Road,
Bijapur – 586101, (Karnataka State),
India.
2. Website URL : www.bldeajssbed.org
3. For Communication : Phone No. 08352 – 223290.

Office

Name	Telephone Number with STD Code	Fax No	E-Mail Address
Head/Principal: Dr.Jagadeesh. B	08352-223290	08352- 223324	bldeajssbed@ymail.com
Vice-Principal	----	----	
Self - appraisal : Co-ordinator Prof. M. S. Hiremath	08352-223290	08352- 223324	maliswami@yahoo.com

Residence

Name	Telephone Number with STD Code	Mobile Number
Head/Principal :Dr. Jagadeesh. B	08352-272484	9901498384
Vice-Principal : -----		
Self - appraisal Co-ordinator:Prof. M. S. Hiremath	08352-220714	9449362595

4. Location of the Institution:

Urban Semi-urban Rural Tribal
Any other (specify and indicate)

5. Campus area in acres: (Annexure: 9)

6.5 acres

6. Is it a recognized minority institution?

Yes

No

7. Date of establishment of the institution:

Month and Year

MM	YYYY
Aug	1980

8. University/Board to which the institution is affiliated: (Annexure:-3)

Institution is affiliated to Karnataka University, Dharwad.
now it comes under Rani Chennamma University, Belagavi.

9. Details of UGC recognition under sections 2(f) and 12(B) of the UGC Act.

Month and Year

MM	YYYY
Dec	1989

(Annexure:-4)

2f

Month and Year

MM	YYYY
Sept	1994

(Annexure:-5)

12B

10. Type of Institution

a. By funding

- | | | | |
|-------|--|-------------------------------------|-------------------------------------|
| | | i. Government | <input type="checkbox"/> |
| B.Ed- | | ii. Grant-in-aid (Annexure:-12) | <input checked="" type="checkbox"/> |
| | | iii. Constituent | <input checked="" type="checkbox"/> |
| M.Ed | | iv. Self-financed | <input type="checkbox"/> |
| | | v. Any other (specify and indicate) | |

b. By Gender

- | | |
|------------------------------------|-------------------------------------|
| i. Only for Men | <input type="checkbox"/> |
| ii. Only for Women | <input type="checkbox"/> |
| iii. Co-education (B.Ed and M.Ed.) | <input checked="" type="checkbox"/> |

c. By Nature

- | | |
|---|-------------------------------------|
| i. University Dept. | <input type="checkbox"/> |
| ii. IASE | <input type="checkbox"/> |
| iii. Autonomous College | <input type="checkbox"/> |
| iv. Affiliated College | <input checked="" type="checkbox"/> |
| v. Constituent College | <input type="checkbox"/> |
| vi. Dept. of Education of Composite College | <input type="checkbox"/> |
| vii. CTE | <input type="checkbox"/> |
| Viii. Any other (specify and indicate) | <input type="checkbox"/> |

11. Does the University / State Education Act have provision for autonomy?

Yes No

If yes, has the institution applied for autonomy?

Yes No

12. Details of Teacher Education programmes offered by the institution:

Sl. No.	Level	Programme/ Course	Entry Qualification	Nature of Award	Duration	Medium of instruction
i)	Pre-primary			Certificate		
				Diploma		
				Degree		
ii)	Primary/ Elementary			Certificate		
				Diploma		
				Degree		
iii)	Secondary/ Sr. secondary			Certificate		
				Diploma		
iv)	Graduate	B.Ed.	B.A/B.Sc	Degree	1 year	Kan/Eng
v)	Post Graduate			Diploma		
		M.Ed.	B.Ed.	Degree	1 year	Kan/Eng
vi)	Other (specify)	IGNOU centre		Certificate	6 months	Eng/Hindi Kan
				Degree	2 years	Eng/Hindi
		KSOU, M.Ed.	B.Ed.	Degree	2 year	Kan/Eng

(Additional rows may be inserted as per requirement)

13. Give details of NCTE recognition (for each programme mentioned in Q.12 above)

Level	Programme	Order No. and Date	Valid upto	Sanctioned Intake
Pre-primary				
Primary/Elementary				
Secondary/ Sr.secondary				
Graduate	B.Ed.	SRO 196/REC06N/955 Date: 5/7/1996 Annexure-6	Permanent	100
Post Graduate	M.Ed.	KR/MED/New/05/SR O/NCTE/2000- 01/1766 Date: 25/08/2000 Annexure-7	Continuati on	40
Other (specify)				

(Additional rows may be inserted as per requirement)

Criterion - I
Curricular Aspects

1. Does the Institution have a stated

Vision ?

Mission ?

Values ?

Objectives ?

Yes	√	No	
Yes	√	No	
Yes	√	No	
Yes	√	No	

2. a) Does the institution offer self-financed programme(s)?

If yes,

a) How many programmes ?

b) Fee charged for each charge per programme

Yes	√	No	
-----	---	----	--

01

B.Ed

Govt. Quota

Management Quota

Science	₹ 8170/-
Arts	₹ 8020/-

Science	₹ 17170/-
Arts	₹ 17020/-

M.Ed

University Quota

Management Quota

₹ 13445/-

₹ 24975/-

3. Are there programmes with semester system ?

√

4. Is the institution representing/participating in the curriculum development/revision processes of the regulatory bodies?

Yes	√	No	
-----	---	----	--

If yes, how many faculties are on the various curriculum development/Revision committees/boards of universities/regulating authority?

4

5. Number of methods /elective /options (programme wise)

D.Ed.		
B.Ed.	Methods-9-Optionals-9	√
M.Ed. (Full Time)	Elective-3	√
M.Ed. (Part Time)	Elective-3	√
Any other (specify and indicate)		

(Annexure- 15 & 16)

6. Are there Programmes offered in modular form?

Yes		No	√
Number			

7. Are there Programmes where assessment of teachers by the students has been introduced?

Yes	√	No	
Number	02		

8. Are there Programmes with faculty exchange visiting faculty?

Yes	√	No	
Number	04		

9. Is there any mechanism to obtain feedback on the curricular aspects from the Heads of practice teaching schools ?

- Academic peers ?
- Alumni ?
- Students ?
- Employers ?

Yes	√	No	
Yes	√	No	
Yes	√	No	
Yes		No	√

10. How long does it take for the institution to introduce a new programme within the existing system?

1 Year

11. Has the institution introduced any new courses in teacher education during the Last three years?

Yes		No	√
-----	--	----	---

Number	
--------	--

12. Are there courses in which major syllabus revision was done during the last five years?

Yes	√	No	
-----	---	----	--

Number	02
--------	----

13. Does the institution develop and deploy action plans for effective implementation of the curriculum?

Yes	<input checked="" type="checkbox"/>	No	<input type="checkbox"/>
-----	-------------------------------------	----	--------------------------

14. Does the institution encourage the faculty to prepare course outlines?

Yes	<input checked="" type="checkbox"/>	No	<input type="checkbox"/>
-----	-------------------------------------	----	--------------------------

Criterion – II
Teaching-Learning and Evaluation

1. How are students selected for admission into various courses?

- | | |
|--|-------------------------------------|
| a) Through an entrance test developed by the institution | <input checked="" type="checkbox"/> |
| b) Common entrance test conducted by the University/Government | <input checked="" type="checkbox"/> |
| c) Through an interview | <input checked="" type="checkbox"/> |
| d) Entrance test and interview | <input checked="" type="checkbox"/> |
| e) Merit at the qualifying examination | <input checked="" type="checkbox"/> |
| f) Any other (specify and indicate) | <input type="checkbox"/> |
| (weightage is in the order b, a, e, c and d.) | <input type="checkbox"/> |

2. Furnish the following information (for the previous academic year):

	B.Ed.	M.Ed.
a) Date of start of the academic year	17-1-2011	1-9-2010
b) Date of last admission	21-1-2011	28-8-2010
c) Date of closing of the academic year	25-10-2011	23-5-2011
d) Total teaching days	202	180
e) Total working days	222	210

3. Total number of students admitted (2010-2011)

Programme	Number of Students			Reserved			Open		
	M	F	Total	M	F	Total	M	F	Total
D.Ed.	-	-	-	-	-	-	-	-	-
B.Ed.	55	28	83	51	15	66	4	13	17
M.Ed. (Full Time)	22	17	39	19	14	33	03	03	06
M.Ed. (Part Time) I-year	27	08	35	-	-	-	-	-	-
M.Ed. (Part Time) II-year	23	02	25	-	-	-	--	-	-

4. Are there any overseas students?

Yes		No	√
-----	--	----	---

If yes, how many?

-

5. What is the 'unit cost' of teacher education programme? (Unit cost = total annual recurring expenditure divided by the number of students/ trainees enrolled).

	B.Ed.	M.Ed.
a) Unit cost excluding salary component	₹ 9039.15/-	₹ 5358.32/-
b) Unit cost including salary component	₹ 55085.61/-	₹ 23145.32/-

c) M.Ed. KSOU, Mysore } Unit cost is decided by KSOU, Mysore.

d) IGNOU. Programmes } Unit cost is decided by IGNOU, New Delhi.

(Please provide the unit cost for each of the programme offered by the institution as detailed at **Question 12** of profile of the institution)

6. Highest and Lowest percentage of marks at the qualifying examination considered for admission during the previous academic session

Programmes	Open		Reserved	
	Highest (%)	Lowest (%)	Highest (%)	Lowest (%)
D.Ed.	-	-	-	-
B.Ed.	80.75	51.38	62.23	52.60
M.Ed. (Full Time)	84.06	65.63	82.86	58.66
M.Ed. (Part Time)	Students Admission made by KSOU Mysore			

7. Is there a provision for assessing students' knowledge and skills for the programme (after admission)?

Yes No

8. Does the institution develop its academic calendar? (Annexure- 18)

Yes No

9. Time allotted (in percentage)

Programmes	Theory%	Practice Teaching%	Practicum%
D.Ed.	-	-	-
B.Ed.	70	25	5
M.Ed. (Full Time)	90	10 (Dissertation)	-
M.Ed. (Part Time)	84	16 (Dissertation)	-

10. Pre-practice teaching at the institution

a) Number of pre-practice teaching days

1	6
---	---

b) Minimum number of pre-practice teaching lessons given by each student

0	6
---	---

11. Practice Teaching at School

a) Number of schools identified for practice teaching

1	6
---	---

b) Total number of practice teaching days

4	0
---	---

c) Minimum number of practice teaching lessons given by each student

2	4
---	---

12. How many lessons are given by the student teachers in simulation and pre-practice teaching in classroom situations?

Number of lessons
In simulation

Number	8
--------	---

Number of Lessons
Pre practice teaching

Number	6
--------	---

13. Is the scheme of evaluation made known to students at the beginning of the academic session?

Yes No

14. Does the institution provide for continuous evaluation?

Yes No

15. Weightage (in percentage) given to internal and external evaluation

Programmes	Internal%	External%
D.Ed.	-	-
B.Ed.	20	80
M.Ed. (Full Time)	25	75
M.Ed. (Part Time)	20	80

16. Examinations

B.Ed.

M.Ed.

I-Sem.II-Sem.

I-Sem.II-Sem.

a) Number of sessional tests held for each paper

1	1	2	2
---	---	---	---

b) Number of assignments for each paper

1	1	1	1
---	---	---	---

17. Access to ICT (Information and Communication Technology) and technology.

	Yes	No
Computers	√	
Intranet (LAN)	√	
Internet	√	
Software / courseware (CDs)	√	
Audio resources	√	
Video resources	√	
Teaching Aids and other related materials	√	
Any other (specify and indicate)	TV, DVD,VCR Slide Projector, LCD- Projector, Interactive White Board (Smart Board)	

18. Are there courses with ICT enabled teaching-learning process?

Yes	√	No	
-----	---	----	--

Number	02
--------	----

19. Does the institution offer computer science as a subject?

Yes	√	No	
-----	---	----	--

If yes, is it offered as a compulsory or optional paper?

Compulsory Optional

Criterion – III
Research, Consultancy and Extension

1. Number of teachers with Ph. D and their percentage to the total faculty strength

Number	8	90%	B.Ed
--------	---	-----	------

2. Does the Institution have ongoing research projects?

Yes	√	No	
-----	---	----	--

If yes, provide the following details on the ongoing research projects

Funding agency	Amount (Rs)	Duration (years)	Collaboration, if any
B.L.D.E. Association (Five staff have undertaken Research Projects)	₹ 50000/-	One year	

(Additional rows/columns may be inserted as per the requirement)

3. Number of completed research projects during last three years.

4. How does the institution motivate its teachers to take up research in education?

(Mark √ for positive response and X for negative response)

- Teachers are given study leave
- Teachers are provided with seed money
- Adjustment in teaching schedule
- Providing secretarial support and other facilities
- Institution provides the increment

√
√
√
√
√

5. Does the institution provide financial support to research scholars?

Yes

√

 No

--

6. Number of research degrees awarded during the last 5 years.

- a. Ph.D.

4

- b. M.Phil.

4

7. Does the institution support student research projects (UG and PG)?

Yes No

8. Details of the Publications by the faculty (Last five years) (Annexure-28)

	Yes	No	Number
International journals	√		09
National journals – referred papers	√		19
Non referred papers	√		01
Academic articles in reputed magazines/news papers	√		10
Books	√		05
Any other (specify and indicate) Books Edited	√		06

9. Are there awards, recognition, patents etc received by the faculty?

Yes No

Number

10. Number of papers presented by the faculty and students (during last five years):

	Faculty	students
National seminars	94	06
International seminars	34	--
Any other academic forum	10	04

11. What types of instructional materials have been developed by the institution?

(Mark '√' for yes and 'X' for No.)

Self-instructional materials	<input checked="" type="checkbox"/>
Print materials	<input checked="" type="checkbox"/>
Non-print materials (e.g. Teaching Aids/audio-visual, multimedia, etc.)	<input checked="" type="checkbox"/>
Digitalized (Computer aided instructional materials)	<input checked="" type="checkbox"/>
Question bank	<input checked="" type="checkbox"/>
Any other (specify and indicate)	<input type="checkbox"/>

12. Does the institution have a designated person for extension activities?

Yes No

If yes, indicate the nature of the post.

Full-time Part-time Additional charge

13. Are there NSS and NCC programmes in the institution?

Yes No

14. Are there any other outreach programmes provided by the institution?

Yes No

15. Number of other curricular/co-curricular meets organized by other academic agencies/NGOs on Campus

16. Does the institution provide consultancy services?

Yes No

In case of paid consultancy what is the net amount generated during last three years.

17. Does the institution have networking/linkage with other institutions/ organizations?

Local level	<input checked="" type="checkbox"/>
State level	<input checked="" type="checkbox"/>
National level	<input checked="" type="checkbox"/>
International level	<input type="checkbox"/>

Criterion – IV
Infrastructure and Learning Resources

1. Built-up Area (in sq. mts.)

2218 sq.mts

2. Are the following laboratories have been established as per NCTE Norms?

- | | | | | |
|--|-----|-------------------------------------|----|--------------------------|
| a) Methods lab | Yes | <input checked="" type="checkbox"/> | No | <input type="checkbox"/> |
| b) Psychology lab | Yes | <input checked="" type="checkbox"/> | No | <input type="checkbox"/> |
| c) Science Lab(s) | Yes | <input checked="" type="checkbox"/> | No | <input type="checkbox"/> |
| d) Education Technology lab | Yes | <input checked="" type="checkbox"/> | No | <input type="checkbox"/> |
| e) Computer lab | Yes | <input checked="" type="checkbox"/> | No | <input type="checkbox"/> |
| f) Workshop for preparing
teaching aids | Yes | <input checked="" type="checkbox"/> | No | <input type="checkbox"/> |
| g) Language Lab | Yes | <input checked="" type="checkbox"/> | No | <input type="checkbox"/> |

3. How many Computer terminals are available with the institution?

25

4. What is the Budget allotted for computers (purchase and maintenance) during the previous academic year 2010-11?

₹ 25,000/-

5. What is the Amount spent on maintenance of computer facilities during the previous academic year 2010-11?

₹ 5084/-

6. What is the Amount spent on maintenance and upgrading of laboratory facilities during the previous academic year?

₹1,41,807/-

7. What is the Budget allocated for campus expansion (building) and upkeep for the current academic session/financial year 2011-12.?

₹ 2,48,272/-

8. Has the institution developed computer-aided learning packages?

Yes No

9. Total number of posts sanctioned

Open Reserved

	Open		Reserved	
	M	F	M	F
B.Ed Teaching	07	03	-	-
Non-teaching	09	01	02	-
Librarian	01	--	--	--
Physical Education Director	01	-	-	-
M. Ed Teaching	03	01	01	-
Non-Teaching	01	-	-	-

10. Total number of posts vacant

Open Reserved

	Open		Reserved	
	M	F	M	F
Teaching	-	-	01	-
Non-teaching	02	-	-	-

11. a. Number of regular and permanent teachers (Gender-wise)

Open Reserved

	Open		Reserved	
	M	F	M	F
B.Ed Lecturers	05	03	-	-
B.Ed Readers	M	F	M	F
	--	--	---	---
B.Ed Professors	M	F	M	F
	01	--	-	-

Open Reserved

M.Ed	M	F	M	F
Lectures	1	1	1	-

b. Number of temporary/ad-hoc/part-time teachers (Gender-wise)

	Open		Reserved	
B. Ed	M	F	M	F
Lecturers	01	01	--	--
M.Ed	M	F	M	F
Lecturers	02	--	--	--
Readers	M	F	M	F
	--	--	--	--
Professors	M	F	M	F
	--	--	--	--

c. Number of teachers from

	B.Ed.	M.Ed.
Same state	09	05
Other states	00	00

12. Teacher student ratio (program-wise)

Programme	Teacher student ratio
D. Ed.	----
B.Ed.	1:10
M.Ed. (Full Time)	1:8
M.Ed. (Part Time)	----

13. a. Non-teaching staff

	Open		Reserved	
B. Ed.	M	F	M	F
Permanent	09	01	02	---
Temporary	M	F	M	F
	-	--	---	---

b. Technical Assistants

	Open		Reserved	
B.Ed.	M	F	M	F
Permanent	01	--	---	---
Temporary	M	F	M	F
	--	-	-	-

14. Ratio of B.Ed and M.Ed Teaching– non-teaching staff

1:1

15. Amount spent on the salaries of teaching faculty during the previous academic session (% of total expenditure)

Year 2010-11

₹ 26,47,374/-

68.64%

16. Is there an advisory committee for the library?

Yes No

17. Working hours of the Library

On working days

8 hrs

On holidays

During examinations

10 hrs

18. Does the library have an Open access facility

Yes No

19. Total collection of the following in the library

a. Books	16200
- Textbooks	1118
- Reference books	5800
- Others	9282
b. Magazines	03
e. Journals subscribed	
- Indian journals	18
- Foreign journals	03
f. Peer reviewed journals	--
g. Back volumes of journals	150
h. E-information resources	
- Online journals/e-journals	--
- CDs/ DVDs	15

- Databases	--
- Video Cassettes	30
- Audio Cassettes	15

20. Mention the

Total carpet area of the Library (in sq. mts.)	177.25 Sq. Mts.
Seating capacity of the Reading room	75

21. Status of automation of Library

Yet to intimate	<input type="checkbox"/>
Partially automated	<input checked="" type="checkbox"/>
Fully automated	<input type="checkbox"/>

22. Which of the following services/facilities are provided in the library?

Circulation	<input checked="" type="checkbox"/>
Clipping	<input checked="" type="checkbox"/>
Bibliographic compilation	<input checked="" type="checkbox"/>
Reference	<input checked="" type="checkbox"/>
Information display and notification	<input checked="" type="checkbox"/>
Book Bank	<input checked="" type="checkbox"/>
Photocopying	<input checked="" type="checkbox"/>
Computer and Printer	<input checked="" type="checkbox"/>
Internet	<input checked="" type="checkbox"/>
Online access facility	<input checked="" type="checkbox"/>
Inter-library borrowing	<input type="checkbox"/>
Power back up	<input checked="" type="checkbox"/>
User orientation /information literacy	<input checked="" type="checkbox"/>
Any other (please specify and indicate)	<input checked="" type="checkbox"/>

23. Are students allowed to retain books for examinations?

Yes	<input checked="" type="checkbox"/>	No	<input type="checkbox"/>
-----	-------------------------------------	----	--------------------------

24. Furnish information on the following

Average number of books issued/returned per day	45
Maximum number of days books are permitted to be retained	
by students	07 Days
by faculty	20 Days
Maximum number of books permitted for issue	
for students	06
for faculty	10
Average number of users who visited/consulted per month	600
Ratio of library books (excluding textbooks and book bank facility) to the number of students enrolled	1:96

25. What is the percentage of library budget in relation to total budget of the institution 2010-11?

0.23 %

26. Provide the number of books/ journals/ periodicals that have been added to the library during the last three years and their cost.

	I 2008-09		II 2009-10		III 2010-11	
	Number	Total cost (in Rs.)	Number	Total cost (in Rs.)	Number	Total cost (in Rs.)
Text books						
Other books	44	₹10591/-	70	₹14624/-	26	₹6807/-
Journals/ Periodicals	05	₹1630/-	04	₹750/-	07	₹750/-
Any others specify and indicate (News paper)	----	₹4376/-	----	₹5248/-	----	₹4991/-
(Additional rows/columns may be inserted as per requirement)						

Criterion – V

Student Support and Progression

1. Programme wise “dropout rate” for the last three batches

Programmes	Year 1 2007-08	Year 2 2008-09	Year 3 2009-10
	----	----	-----
B.Ed.	1%	2%	1%
M.Ed. (Full Time)	Nil	Nil	5%
M.Ed. (Part Time)	Nil	Nil	Nil

2. Does the Institution have the tutor-ward/or any similar mentoring system?

Yes	√	No	
-----	---	----	--

If yes, how many students are under the care of a mentor/tutor?

12

3. Does the institution offer Remedial instruction?

Yes	√	No	
-----	---	----	--

4. Does the institution offer Bridge courses?

Yes	√	No	
-----	---	----	--

5. Examination Results during past three years (provide year wise data)

	(B.Ed.)			(M.Ed.)		
	2007-08	2008-09	2009-10	2007-08	2008-09	2009-10
Pass percentage	99%	96%	100%	100%	97.5%	100%
Number of first classes	31	42	38	09	37	30
Number of distinctions	60	40	52	16	02	03
Second Classes	06	12	07	---	---	---
(Gold Medal and university ranks)	---	02 1 st and 10 th	---	---	---	---

6. Number of students who have passed competitive examinations during the last three years (provide year wise data)

NET
SLET/SET
Any other K.E.S

	2007-08	2008-09	2009-10
NET	01	02	01
SLET/SET			
Any other K.E.S	01	---	04

7. Mention the number of students who have received financial aid during the past three years.

Financial Aid	2007-08	2008-09	2009-10
Merit Scholarship	----	04	----
Merit-cum-means scholarship	----	----	----
Fee concession	27	24	----
Loan facilities	---	----	02
SC/ST/BCM (B.Ed)	36	18	15
SC/ST/BCM (M.Ed)	05	02	05
PH	01	---	03

(Additional rows may be inserted as per requirement)

8. Is there a Health Centre available in the campus of the institution?

Yes	√	No	
-----	---	----	--

9. Does the institution provide Residential accommodation for:

Faculty

Yes		No	√
Yes		No	√

Non-teaching staff

10. Does the institution provide Hostel facility for its students?

Yes	√	No	
-----	---	----	--

If yes, number of students residing in hostels

Men	<input type="text" value="---"/>
Women	<input type="text" value="11"/>

11. Does the institution provide indoor and outdoor sports facilities?

Sports fields	Yes	√	No	
Indoor sports facilities	Yes	√	No	
Gymnasium	Yes	√	No	

12. Availability of rest rooms for Women

Yes	√	No	
-----	---	----	--

13. Availability of rest rooms for men

Yes	√	No	
-----	---	----	--

14. Is there transport facility available?

Yes	√	No	
-----	---	----	--

15. Does the Institution obtain feedback from students on their campus experience?

Yes	√	No	
-----	---	----	--

16. Give information on the Cultural Events (Last year data) in which the institution participated/organised.

	Organized			Participated		
	Yes	No	Number	Yes	No	Number
Inter-collegiate	√		01	√		22
Inter-university	√		01	√		01
National						
Any other (specify and indicate)						

(Excluding college day celebration)

17. Give details of the participation of students during the past year at the university, state, regional, national and international sports meets.

	Participation of students (Numbers)	Outcome (Medal achievers)
State	-	-
Regional	-	-
National	-	-
International	-	-
Inter University	01	-
University	02	1- Blue- Cycling
Inter-collegiate	26	Silver – 2 – cycling Bronze-2– cycling Team- 4 th place in Ball badminton

18. Does the institution have an active Alumni Association?

Yes	<input checked="" type="checkbox"/>	No	<input type="checkbox"/>
-----	-------------------------------------	----	--------------------------

If yes, give the year of establishment

2006

19. Does the institution have a Student Association/Council?

Yes	<input checked="" type="checkbox"/>	No	<input type="checkbox"/>
-----	-------------------------------------	----	--------------------------

20. Does the institution regularly publish a college magazine?

Yes	<input checked="" type="checkbox"/>	No	<input type="checkbox"/>
-----	-------------------------------------	----	--------------------------

21. Does the institution publish its updated prospectus annually?

Yes	<input checked="" type="checkbox"/>	No	<input type="checkbox"/>
-----	-------------------------------------	----	--------------------------

22. Give the details on the progression of the students to employment/further study
(Give percentage) for last three years

	Year 1 (%) 2008	Year 2 (%) 2009	Year 3 (%) 2010
Higher studies	25%	22%	21%
Employment (Total)	50%	68%	55%
Teaching	40%	54%	40%
Non teaching	10%	14%	15%

23. Is there a placement cell in the institution?

Yes No

If yes, how many students were employed through placement cell during the past three years.

	2007-08	2008-09	2009-10
Approximately	10	15	20

24. Does the institution provide the following guidance and counseling services to students?

	Yes	No
• Academic guidance and Counseling	<input checked="" type="checkbox"/>	<input type="checkbox"/>
• Personal Counseling	<input checked="" type="checkbox"/>	<input type="checkbox"/>
• Career Counseling	<input checked="" type="checkbox"/>	<input type="checkbox"/>

Criterion – VI

Governance and Leadership

1. Does the institution have a functional Internal Quality Assurance Cell (IQAC) or any other similar body/committee

Yes

No

2. Frequency of meetings of Academic and Administrative Bodies: (last year)

Governing Body/management	Quarterly
Staff council	Weekly
IQAC/or any other similar body/committee	Quarterly
Internal Administrative Bodies contributing to quality improvement of the institutional processes. (mention only for three most important bodies)	Yes

3. What are the Welfare Schemes available for the teaching and non-teaching staff of the institution?

Loan facility

Yes	√	No	
Yes	√	No	
Yes	√	No	
Yes	√	No	

Medical assistance

Insurance

Other (Specify and indicate)

(Fee Concession for Children of staff members,
EPF)

4. Number of career development programmes made available for non-teaching staff during the last three years

2007-08 2008-09 2009-10

3	3	2
---	---	---

5. Furnish the following details for the past three years

- a. Number of teachers who have availed the Faculty Improvement Program of the UGC/NCTE or any other recognized Organization

2007-08 2008-09 2009-10

8	6	8
---	---	---

b. Number of teachers who were sponsored for professional development programmes by the institution

	2007-08	2008-09	2009-10
National Level – B.Ed	07	04	07
– M.Ed	02	02	01

	2007-08	2008-09	2009-10
International Level – B.Ed	03	--	04
– M.Ed	01	--	01

c. Number of faculty development programmes organized by the Institution:

2007-08	2008-09	2009-10
3	2	3

d. Number of Seminars/ workshops/symposia on Curricular development, Teaching- learning, Assessment, etc. organized by the institution

2007-08	2008-09	2009-10
2	2	3

e. Research development programmes attended by the faculty

2007-08	2008-09	2009-10
---	03	04

f. Invited/endowment lectures at the institution

2007-08	2008-09	2009-10
05	05	06

Any other area (specify the programme and indicate)

2007-08	2008-09	2009-10
----	----	----

6. How does the institution monitor the performance of the teaching and non-teaching staff?

a. Self-appraisal

b. Student assessment of faculty performance

c. Expert assessment of faculty performance

d. Combination of one or more of the above

e. Any other (specify and indicate)

Yes	√	No	
Yes	√	No	
Yes	√	No	
Yes	√	No	
Yes		No	

7. Are the faculty assigned additional administrative work?

Yes	√	No	
-----	---	----	--

If yes, give the number of hours spent by the faculty per week

4-Hours

8. Provide the income received under various heads of the account by the institution for previous academic session

Grant-in-aid

₹ 2,91,034/-

Management given

₹ 42,87,954/-

Fees (B.Ed Aided)	For Management Students Science	₹17170 X 2 = ₹34340/-
	For Management Students Arts	₹17020 X 7 = ₹119140/-
	For Government Quota Science	₹8170 X 34 = ₹277780/-
	For Government Quota Arts	₹8020 X 40 = ₹32800/-
	Total	₹ 464060/-
Donation		
Self financed courses (M.Ed)	M.Ed. fee for Management Quota	₹24975 X 20 = ₹499500/-
	Fees for University Quota	₹13445 X 19 = ₹255455/-
	Total	₹ 754955

Any other (specify and indicate)

Rs. 1,59,255/-

9. Expenditure statement (for last two years)

	2009-10	2010-11
Total sanctioned Budget	₹ 40,72,500	₹ 53,31,500
% spent on the salary of faculty	88.83	85.88
% spent on the salary of non-teaching employees		
% spent on books and journals	0.506	0.23
% spent on developmental activities (expansion of building)	3.51	9.67
% spent on telephone, electricity and water		
% spent on maintenance of building, <u>sports facilities</u> , hostels, residential complex and student amenities, etc.	2.22	1.73
% spent on maintenance of equipment, teaching aids, contingency etc.	2.00	2.84
% spent on research and scholarship (seminars, conferences, faculty development programs, faculty exchange, etc.)	3.94	6.95
% spent on travel	0.74	0.44
Any other (specify and indicate)	0.88	2.26
Total expenditure incurred	₹41,61,826/-	₹58,65,531/-

(Annexure-)

10. Specify the institutions surplus/deficit budget during the last three years? (specify the amount in the applicable boxes given below)

Year	Surplus in Rs.	Deficit in Rs.
2007-08	-	₹ 13,67,644.94/-
2008-09	-	₹ 89,326/-
2009-10	-	₹ 5,34,031/-

11. Is there an internal financial audit mechanism?

Yes No

12. Is there an external financial audit mechanism?

Yes No

13. ICT/Technology supported activities/units of the institution:

Administration	Yes	√	No	
Finance	Yes	√	No	
Student Records	Yes	√	No	
Career Counseling	Yes	√	No	
Aptitude Testing	Yes	√	No	
Examinations/Evaluation/ Assessment	Yes	√	No	
Any other (specifies and indicates) Internal Assessment	Yes	√	No	

14. Does the institution have an efficient internal coordinating and monitoring mechanism? Yes No

15. Does the institution have an inbuilt mechanism to check the work efficiency of the non-teaching staff? Yes No

16. Are all the decisions taken by the institution during the last three years approved by a competent authority? Yes No

17. Does the institution have the freedom and the resources to appoint and pay temporary/ ad hoc / guest teaching staff? Yes No

18. Is a grievance redressal mechanism in vogue in the institution?

a) for teachers

b) for students

c) for non - teaching staff

19. Are there any ongoing legal disputes pertaining to the institution? Yes No

20. Has the institution adopted any mechanism/process for internal academic audit/quality checks?

Yes No

21. Is the institution sensitized to modern managerial concepts such as strategic planning, teamwork, decision-making, computerization and TQM?

Yes No

Criterion – VII

Innovative Practices

1. Does the institution have an established Internal Quality Assurance Mechanisms?

Yes No

2. Do students participate in the Quality Enhancement of the Institution?

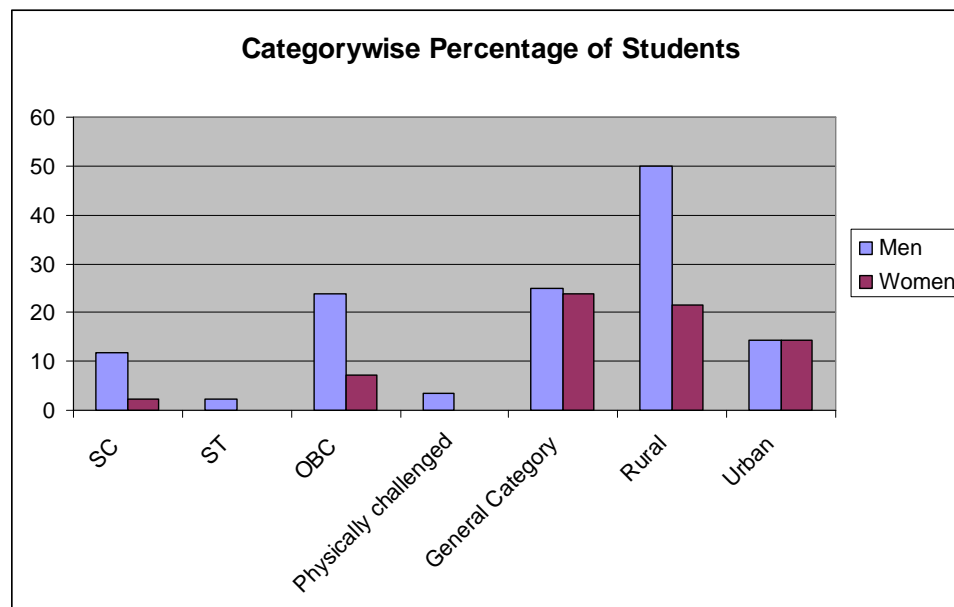
Yes No

3. What is the percentage of the following student categories in the institution?

B. Ed:

Year 2010 -11					
	Category	Men	%	Women	%
A	SC	10	11.90	02	2.38
B	ST	02	2.38	-----	-----
C	OBC	20	23.80	06	7.1
D	Physically challenged	03	3.57	-----	-----
E	General Category	21	25.00	20	23.80
F	Rural	42	50	18	21.42
G	Urban	12	14.28	12	14.28
H	Any other (specify)	-----	-----	-----	-----

B.Ed



M. Ed:

Year 2010 -11					
	Category	Men	%	Women	%
A	SC	03	7.69	02	5.12
B	ST	01	2.56	01	2.56
C	OBC	15	38.46	11	28.20
D	Physically challenged	-----	-----	-----	----
E	General Category	03	7.69	03	7.69
F	Rural	15	38.46	10	25.64
G	Urban	10	25.64	04	10.25
H	Any other (specify)	-----	-----	-----	-----

4. What is the percentage of the staff in the following category?

B .Ed:

	Category	Teaching staff	%	Non-teaching staff	%
A	SC	---	----	02	14.28
B	ST	---	---	---	---
C	OBC	---	---	----	---
D	Women	03	33.33	01	7.14
E	Physically challenged	-----	---	---	----
F	General Category	06	66.66	11	78.57
G	Any other (specify)	---	---	---	---

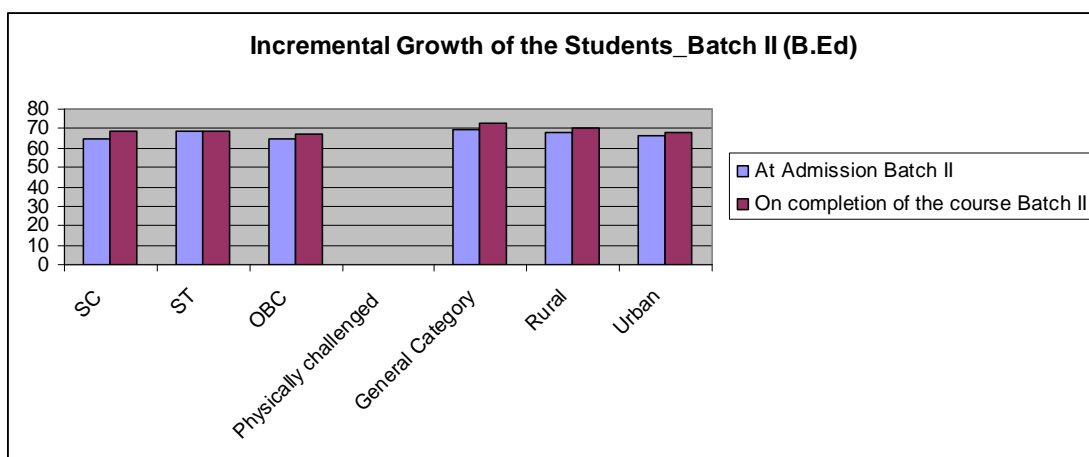
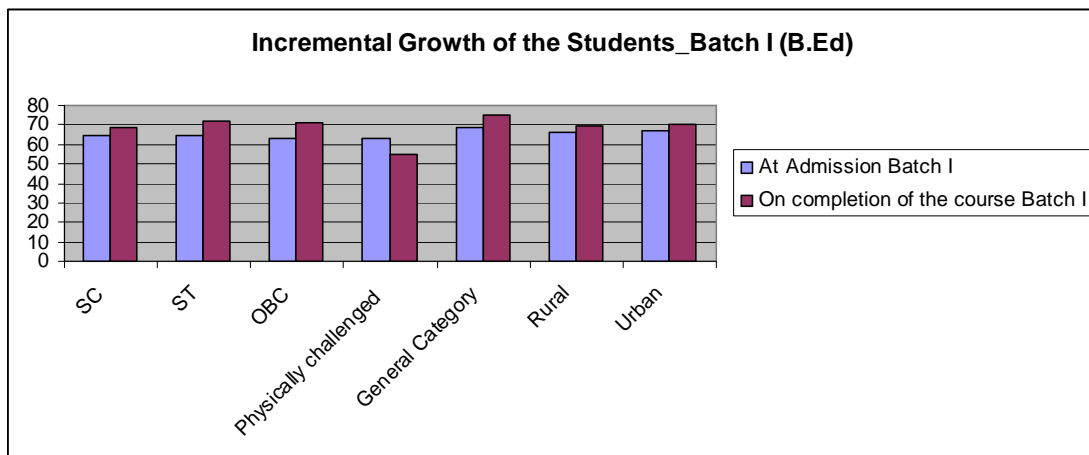
M. Ed:

	Category	Teaching staff	%	Non-teaching staff	%
A	SC	01	20	--	--
B	ST	---	---	---	--
C	OBC	---	---	---	--
D	Women	01	20	---	---
E	Physically challenged	---	---	---	---
F	General Category	03	60.00	01	100
G	Any other (specify)				

5. What is the percentage incremental academic growth of the students for the last two batches?

B. Ed:

Category	At Admission		On completion of the course	
	Batch I	Batch II	Batch I	Batch II
SC	64.87	65.05	68.91	68.30
ST	64.38	68.92	71.91	68.87
OBC	63.00	64.44	71.30	67.33
Physically challenged	62.97	---	54.78	----
General Category	68.48	69.22	75.11	73.12
Rural	66.46	67.77	69.48	70.08
Urban	67.14	66.15	70.42	68.03
Any other (specify)	----	----	----	----



M. Ed:

Category	At Admission		On completion of the course	
	Batch I	Batch II	Batch I	Batch II
SC	75.72	73.02	72.18	76.00
ST	74.72	74.00	68.05	72.05
OBC	74.30	---	67.66	----
Physically challenged	---	70.90	-----	68.01
General Category	74.00	71.36	69.13	70.01
Rural	76.01	69.79	68.33	69.06
Urban	73.44	71.63	67.44	69.87
Any other (specify)	----	-----	-----	-----

EXECUTIVE SUMMARY

B.L.D.E.Association's, J.S.S.College of Education was established in 1980. The College is named after a great saint, seer and philosopher, his Holiness Jnanayogi Shri Siddeshwar Swamiji. The College was affiliated to Karnataka University, Dharwad and recognized by N.C.T.E. in 1983. Presently, it is affiliated to Rani Channamma University, Belagavi. It is permanently affiliated to Rani Channamma University (RCU), Balagavi and included under Section 2(f) and 12 (B) of the UGC Act.

The College has self financed Post Graduate M.Ed. programme besides B.Ed. programme. It has qualified, experienced and permanent staff with 90% Ph.D. holders in B.Ed. The College has K.S.O.U. Mysore Two years distance education M.Ed course with 125 programmes, and IGNOU Study Center for imparting Distance Education for the disabled students, housewives and working people who want to improve their qualifications for promotions.

The building of the College stands on a wide expanse of 6.5 acres of land in the midst of Bijapur. (Annexure-9) The main building consists of ground floor with first and second floor. The hallmarks of this temple of learning are classrooms, subject wise labs, language lab, computer lab, library, sports room, staff room, administrative block. In addition, the college has a vast playground with six tracks measuring 9500sq.mtrs for outdoor sports activities. Further, the College has the facility for indoor games and open space for morning prayer. It shares other facilities with B.L.D.E. Association's sister institution's in the campus.

The College has a transparent admission process and follows Government of Karnataka Reservation policy. It adheres to Parent University's curriculum and Academic Calendar. The recruitment of teaching staff is made as per the guidelines of the State Government and U.G.C. norms. The Institute's faculty members are trained by N.C.T.E. It is governed and well managed by pro-developmental B.L.D.E.Association.

The College has identified 16 Practice Teaching Schools in and around Bijapur. The student – teachers engage 24 lessons in a year. The student-teachers get experiential learning in these practice teaching schools. They develop knowledge and skills through micro and macro teaching, use of smart board, PPT presentation and other multi media teaching aids. The University curriculum, academic training, community orientation programmes develop intellectual capital among the student-teachers.

The extension activities carried out such as a Blood Donation Camp, Free Medical Check-up, Awareness on Aids, Health and Hygiene, Population Problems, Environment , Citizenship Training Camp, Literacy survey have helped in bringing social awareness in the community and contributed to community development. These activities have developed social responsibilities, citizenship values, dignity of labour, togetherness, equity, principle of inclusiveness, sharing and caring attitude for the poor among the students.

The Bijapur district is backward in literacy, education, income, health, economy, human development index. The UGC has also recognized the fact of its backwardness. Facing these challenges , the institute is making efforts to ensure access, equity, gender relevance and thrust to uplift the disadvantaged students. The College is sustaining and enhancing quality by transparency in admission, examination, teachers and programme evaluation by the stake holders. The thrust on the use of ICT, focus on learner-centric methods, access to the library and internet empower the students. The institute has decentralized administration through its established IQAC. It implements curricular, co-curricular and extension activities such as Conferences, Seminars, Workshops, Teacher and Student Training programmes to enhance quality in the Institute. In the last 32 years the College is marching ahead from strength to strength in curricular, teaching-learning, research output, extension alumni student support activities and innovative practice by fine tuning its programmes to the needs of the students and society.

- ❖ The institute proposes to enlist the strengths, weakness, opportunities and threats
- ❖ The institute by accepting the challenges needs to overcome them in future plans.

Strengths:

- ❖ B.L.D.E. Association is guiding force behind the quality education.
- ❖ Highly qualified and experienced faculty. 90% of faculty (B.Ed) confirmed with Ph.D. Degree.
- ❖ Tuned vision, mission and objectives
- ❖ Excellent examination results
- ❖ Adequate infrastructure.
- ❖ Reputed teacher education institution recognized by experts.
- ❖ 16 practice teaching schools
 - a) 3 Practicing schools in the campus
 - b) 13 Practicing schools outside the campus
- ❖ M.Ed regular course and M.Ed distance mode course of KSOU, Mysore.
- ❖ IGNOU Regional Center
- ❖ Active linkages with local, state and national bodies.
- ❖ Grant-in-aid from May-2009.
- ❖ Publication of Research Articles and books by the faculty.
- ❖ Published Research Journals
- ❖ ICT based teaching
- ❖ Achievement in sports events
- ❖ Campus is free from ragging and drug addiction
- ❖ Transparency in admission and examination

WEAKNESSES:

- ❖ E-administration
- ❖ Digital library

OPPORTUNITIES

- ❖ To establishing Research Center
- ❖ To apply for Major and Minor UGC projects
- ❖ To have linkages with International Organizations
- ❖ To introduce Add-On-Courses

THREATS

- ❖ Mushrooming of new B.Ed colleges
- ❖ Less number of English medium students

Keeping SWOT analysis in mind, the college desires to fine tune all the existing systems and process to maximize the output in terms of quality and relevance in Higher Education.

B.L.D.E. Association's JSS College of Education, Bijapur

Overall Progress of the Institution in the last five years

Curricular Aspects		
Particulars	Till 2007	2007-2012
Course type	Semester system in M.Ed	CBCS and Grade system
Intake of students (M.Ed)	25 Seats	40 seats
Co-curricular activities	Held few	Held subject wise activities
Teaching-Learning & Evaluation		
Academic calendar	Not planned properly	Well designed and planned
Use of multi-media	20%	80%
Evaluation of teachers by students	Not evaluated	Evaluated
Evaluation of teachers by Management	Not evaluated	Evaluated
Papers presented by the staff at National Seminars/Conferences	10	94
International conferences	02	34
Papers presented by the students	Nil	06
Research, Consultancy & Extension		
No. of Ph.D holders at B.Ed	50%	90%
No. of Ph.D holders at M.Ed	Nil	04 Members pursuing
Publication of journals	Nil	Published Journal B.L.D.E.A's Journal of Education & Research.
Articles published in		
National journals	13	19
International journals	Nil	09
Publication of books	02	05

Books edited	03	06
Consultancy		
Honorary	Nil	5 staff provided consultancy
Extension services	05	12
Recognition of the staff	No one received	02 staff members received recognition.
Infrastructure and Learning Resources		
Books	14000	16200
INFLIBINET membership	Not subscribed	Subscribed
Installation of software	Not installed	Installed NEWGENLIB
Internet Access to the Students	Limited Access	Open Access
Access to E-journal	No provision	Provided
Issue of books to the students	Manuel	Computerised
Bar-coding of books	Not coded	Coded
Seed money from the Management to pursue Research	Nil	Rs. 50,000
LCDs	Nil	02
No. of Computers	14	25
LAN facility	--	Installed
Built up area of the college	1800 sq.mtrs	2218 sq.mtrs
Building for M.Ed	Shared	Independent building
Student Support and Progression		
Equity	13.6% -SC 1.6 % - ST 4% -OBC 50.6% -Women (last 3 years)	15.33% -SC 3 % -ST 60.33% -OBC 43% - Women (Last 3 years)
Mentor system	Was not organised properly	Active
Remedial & bridge courses	Not held	Held
Alumni Association	Not registered	Registered

Health centre	Not established	Established
No. of programmes organised by Alumni	Were few	Held 01 state level workshop and 03 University level workshop
No. of University blues	Nil	01
Achievement in sports	Nil	has increased
Inter-collegiate sports and cultural activities	Nil	Organised
Extension activities	Were few	Community based many programmes organised
Governance & Leadership		
IQAC	Not established	Established
MIS	Not implemented	Implemented
Seminars (National)	01	01
Conferences (National)	--	01
Workshops (State Level/University level)	--	04
Innovative Practices		
<ul style="list-style-type: none"> • Ensuring quality initiatives • Involving all stake holders • Thrust to Value Education, National Development, Patriotic, Social Values and Global Competencies • Innovations in practice teaching 		